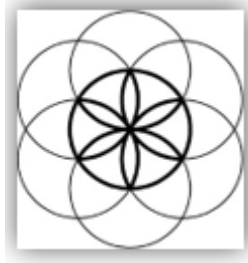


Pulsed Frequency™



EM272Basic Software Download, Installation and User Guide

Contents

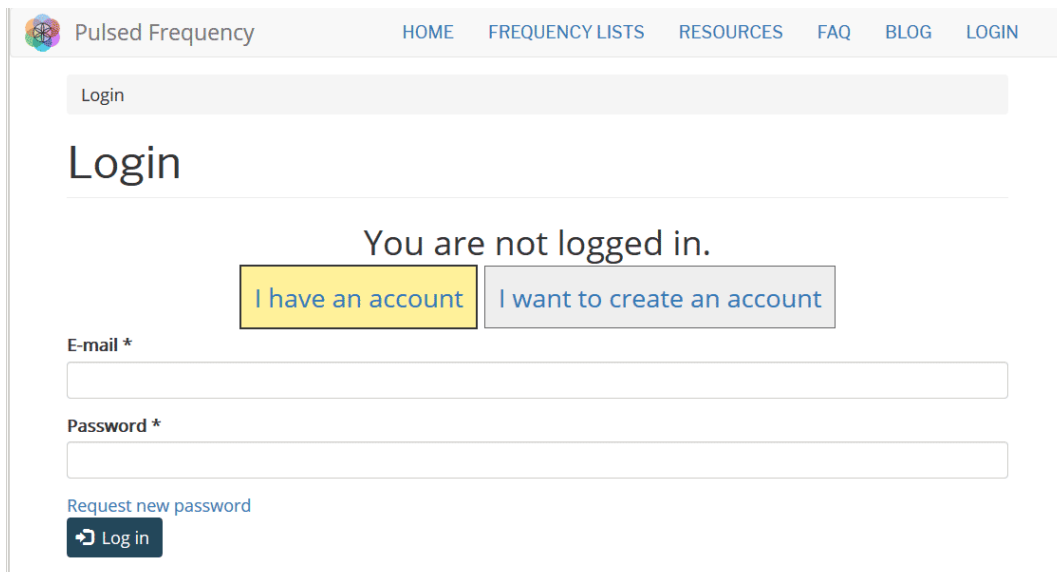
Account Registration.....	3
Create an Account.....	4
Download the Software	6
Chrome.....	7
Edge.....	8
Firefox	10
Install the Software.....	12
Just Feel Better!	17
Connect EM272 / EM272A to Your Computer.....	22
Load a Program into the EM272	25
Check for Software Updates	26
Troubleshooting.....	28
EM272 Manual Detection	31

Account Registration

To download the Pulsed Frequency software, please go to www.pulsedfrequency.com.



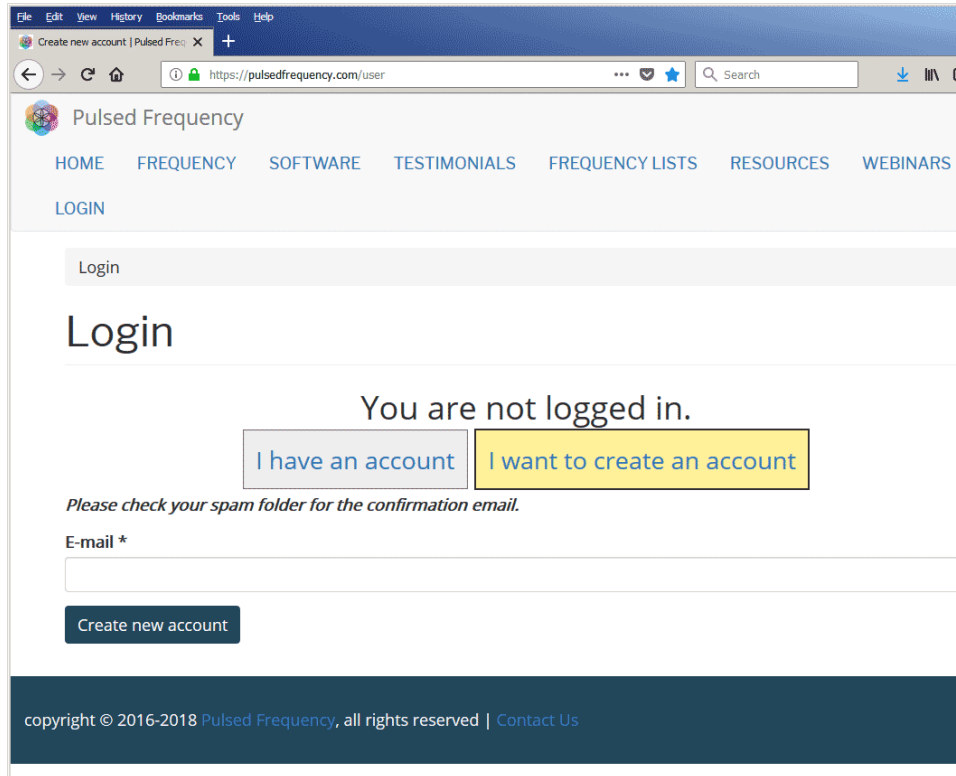
Click where the arrow is pointing. You will be taken to a Login screen.



If you already have an account, click **I have an account**. Enter your email address and password and then click **Log in**.

Create an Account

If you do not have an account, select **I want to create an account**.



File Edit View History Bookmarks Tools Help

Create new account | Pulsed Fre: X +

https://pulsedfrequency.com/user

Pulsed Frequency

HOME FREQUENCY SOFTWARE TESTIMONIALS FREQUENCY LISTS RESOURCES WEBINARS

LOGIN

Login

Login

You are not logged in.

I have an account I want to create an account

Please check your spam folder for the confirmation email.

E-mail *

Create new account

copyright © 2016-2018 Pulsed Frequency, all rights reserved | Contact Us

Enter your email address, then click **Create new account**. Further instructions will then be sent to your email address. The confirmation email will look something like this.



Click on the link in the email and you will be taken back to the website to reset your password.

You have just used your one-time login link. It is no longer necessary to use this link to log in. Please change your password. ×

[View](#) [Edit](#) [Orders](#)

E-mail address *

Password

Confirm password

Email updates
 Subscribe

Locale settings
Time zone

Enter a New password in both fields.

You have just used your one-time login link. It is no longer necessary to use this link to log in. Please change your password. ×

[View](#) [Edit](#) [Orders](#)

E-mail address *

Password
 ✓

Confirm password
 ✓

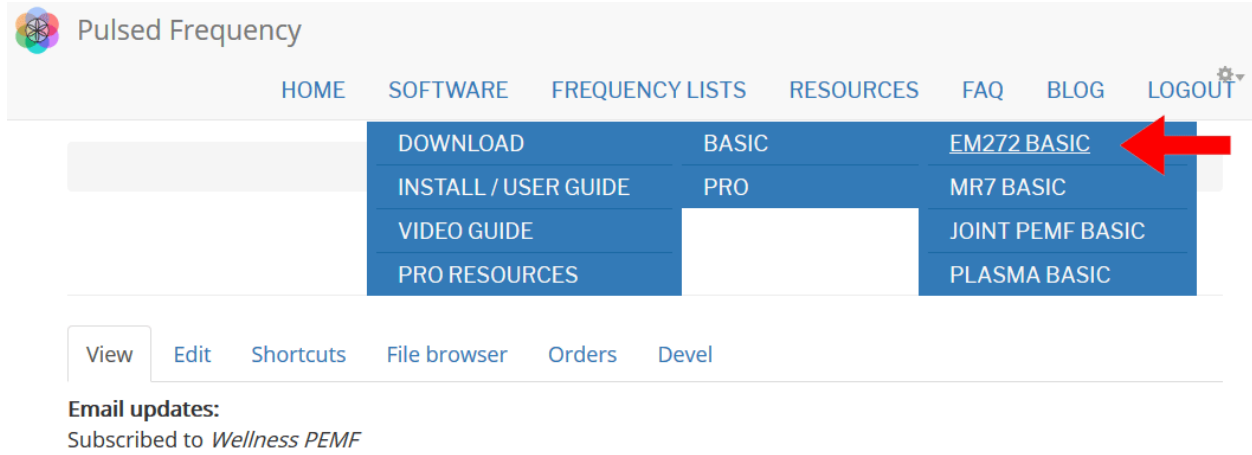
Email updates
 Subscribe

Locale settings
Time zone

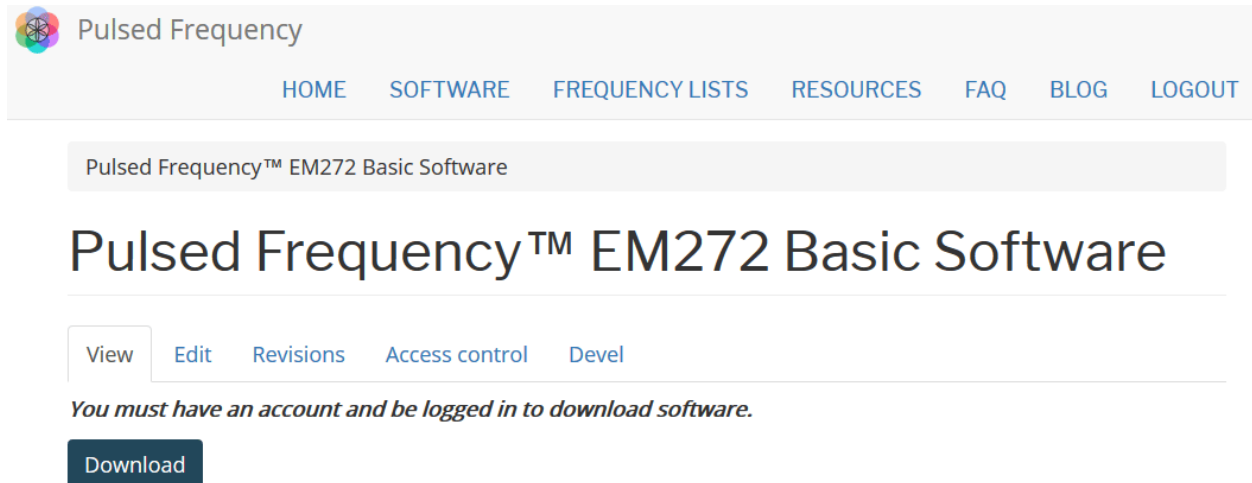
After you have changed your password, click the **Save** button. You will be told that the changes have been saved.

Download the Software

If you aren't already logged in, log into your account, then click the Software menu item.



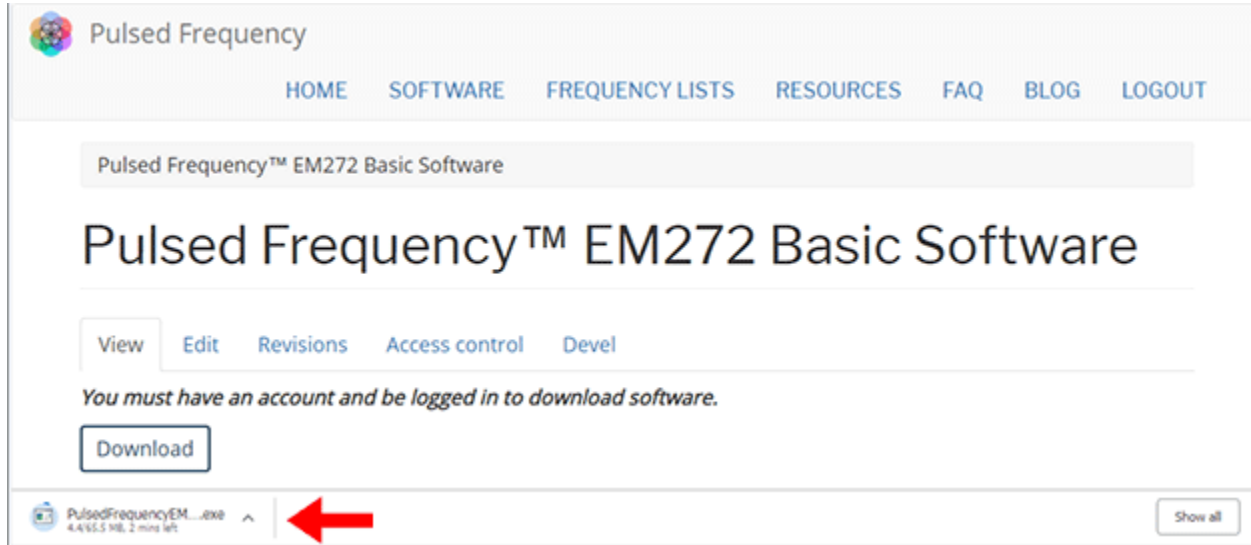
Point to **Download**, point to **Basic**, then click **EM272BASIC**. When you do this, you will be taken to the following page.



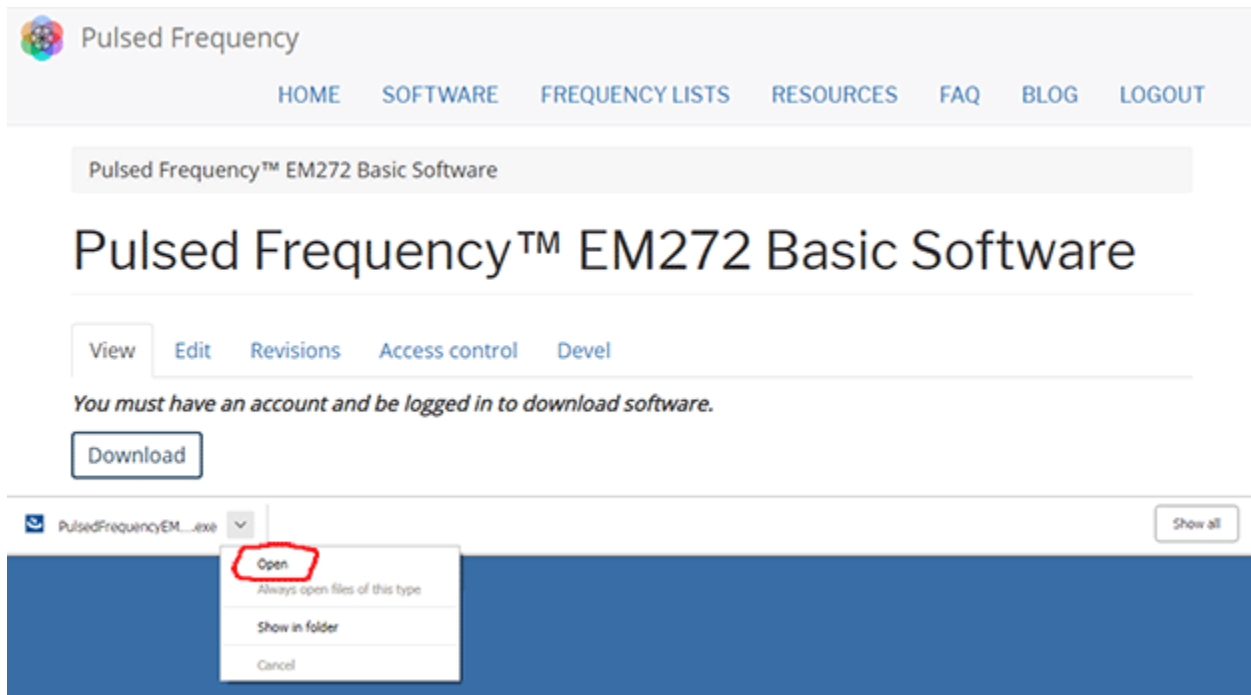
Click the **Download** button.

What happens next depends on the web browser you are using. Here are instructions specific to the three main browsers being used today.

Chrome



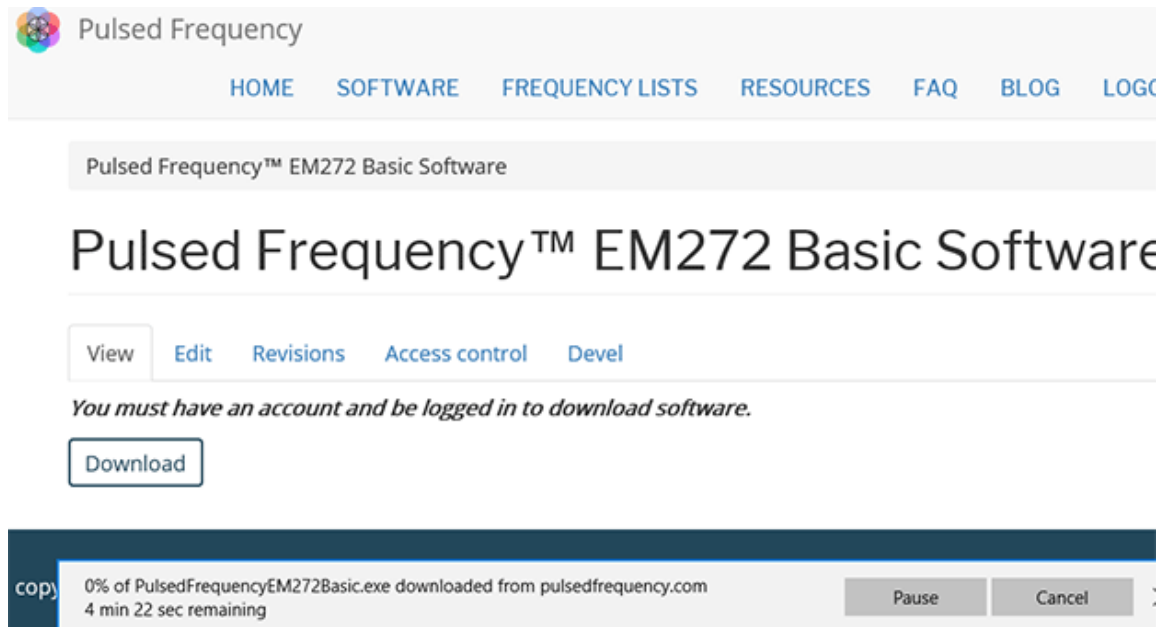
When you click the **Download** button, a notification displays in the lower left hand corner of the browser that alerts you to the file being downloaded. You will see the number of bytes that have been downloaded and the total size of the file.



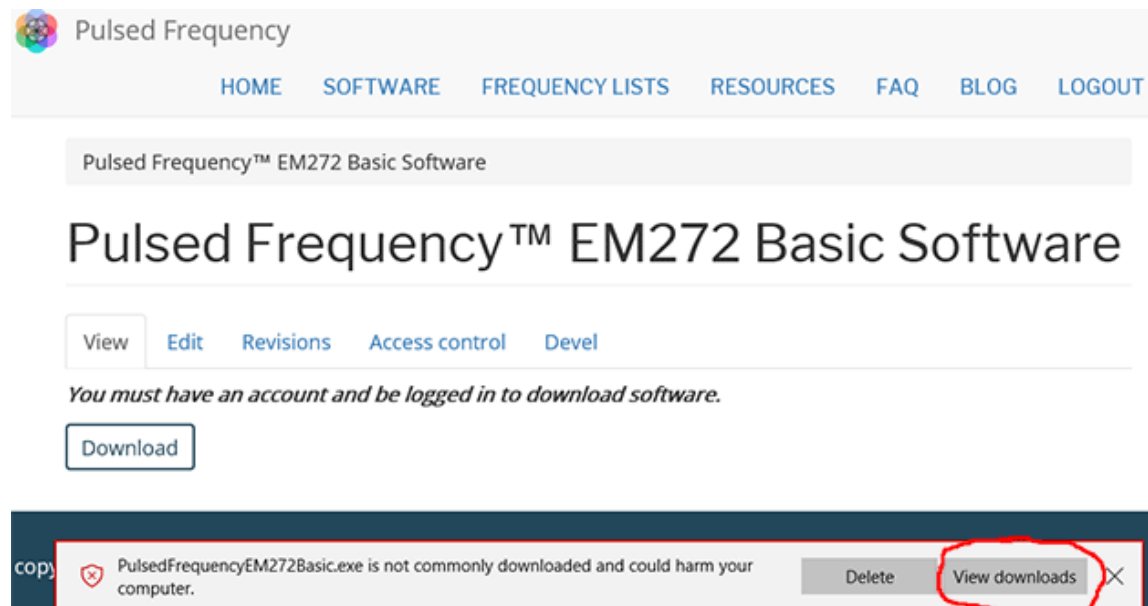
When the file download has completed, click the down arrow and then click **Open**. This will run the installation program for the **EM272Basics** software.

Edge

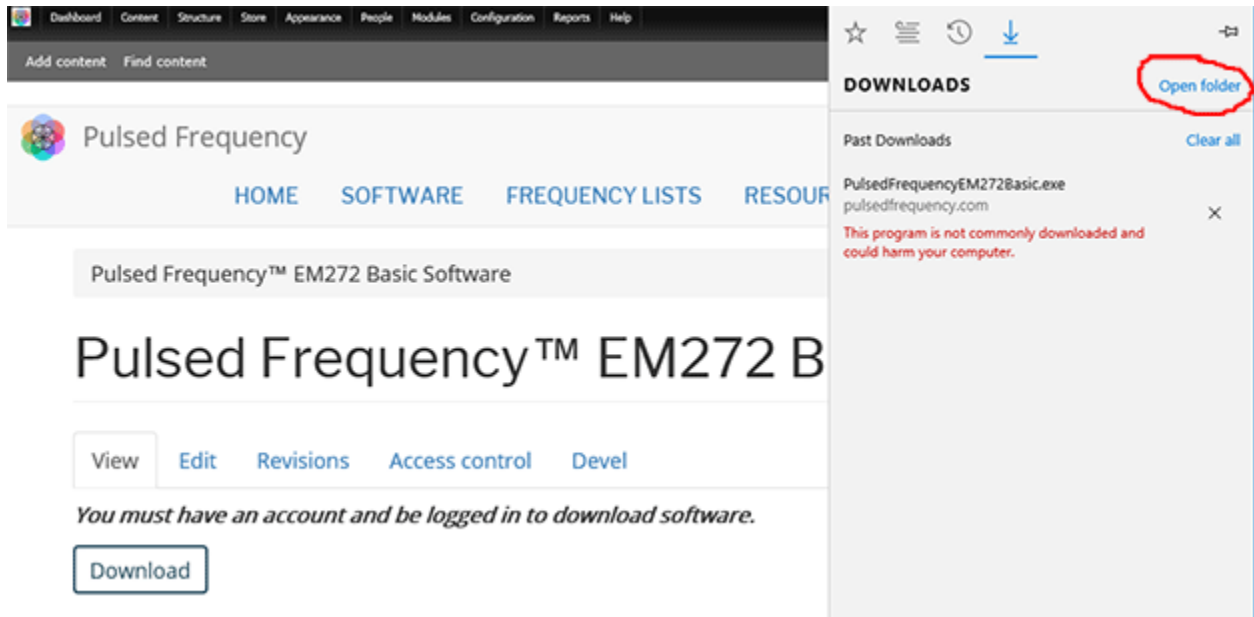
When you click the **Download** button, a small rectangular window will display at the bottom of the screen.



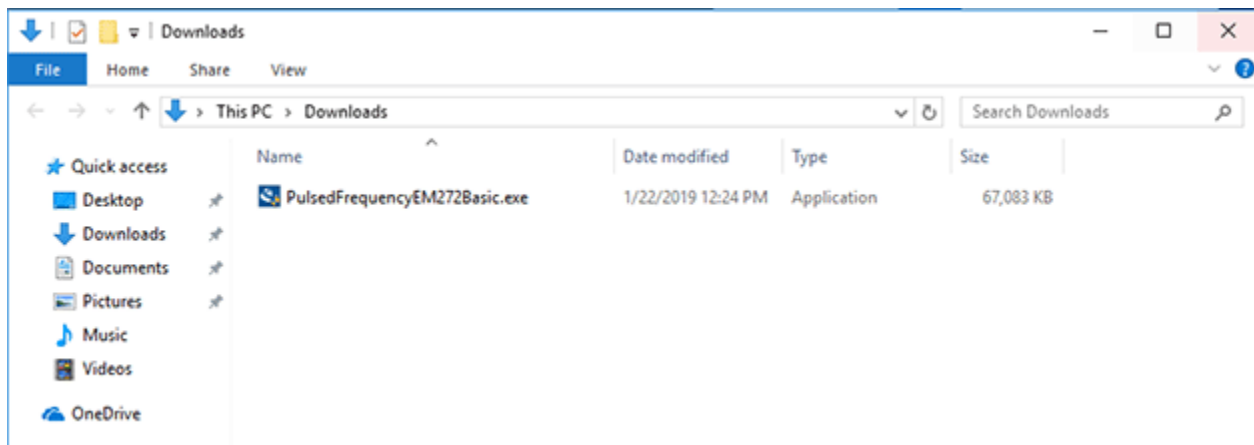
This window will show the progress of the file being downloaded.



When file download has completed, click the **View Downloads** button.



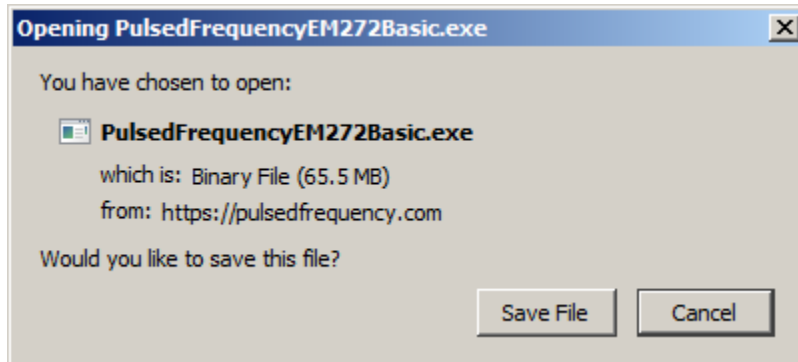
In the upper right hand corner of the screen above, click **Open Folder**.



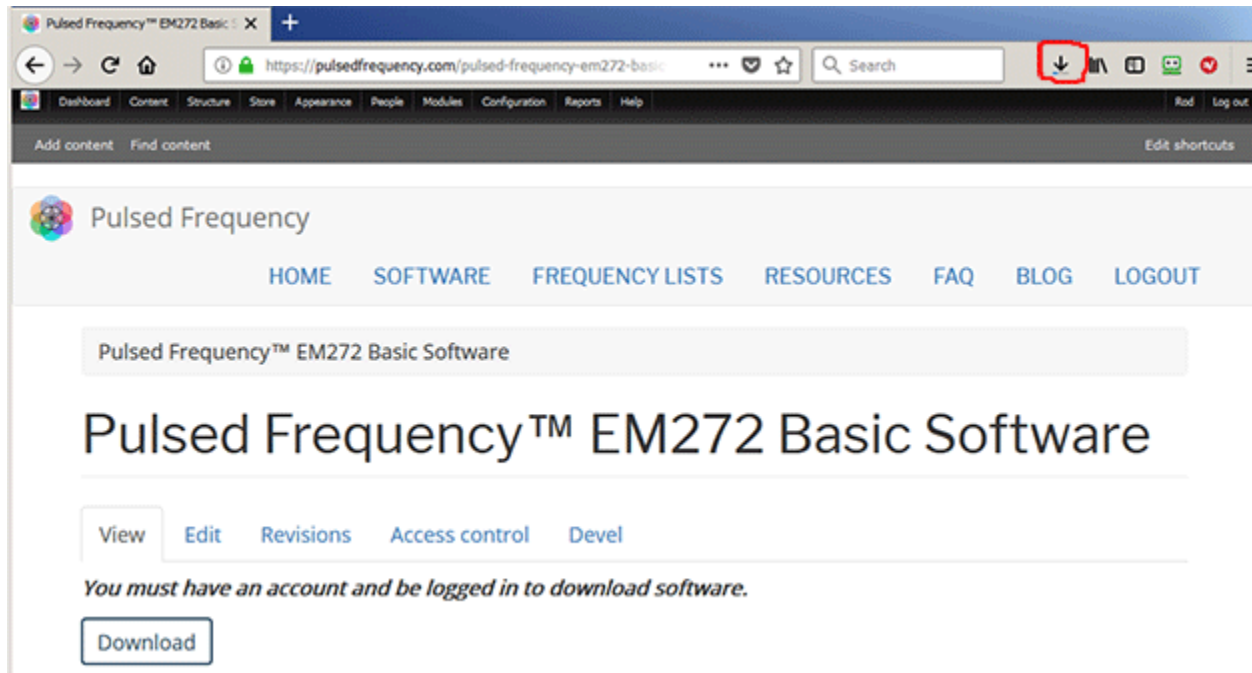
Double-click **PulsedFrequencyEM272Basic.exe** to run the installation program for the **EM272 Basic** software.

Firefox

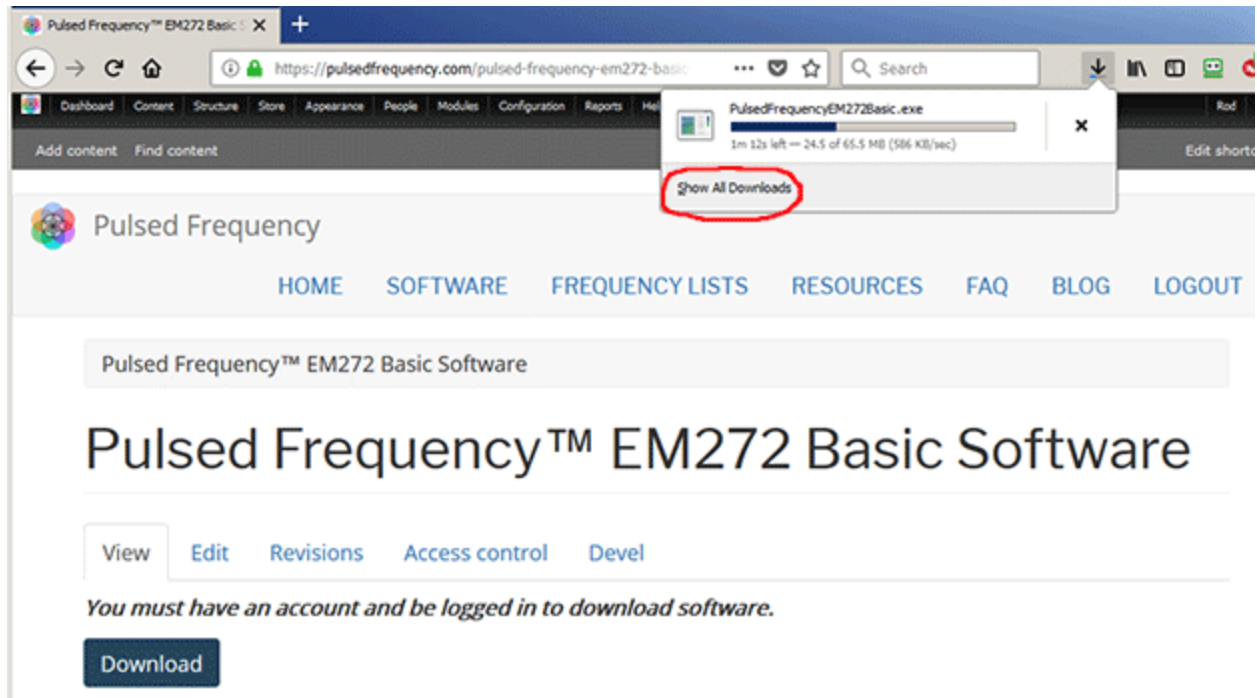
When you clicked the **Download** button, the following dialog box popped up.



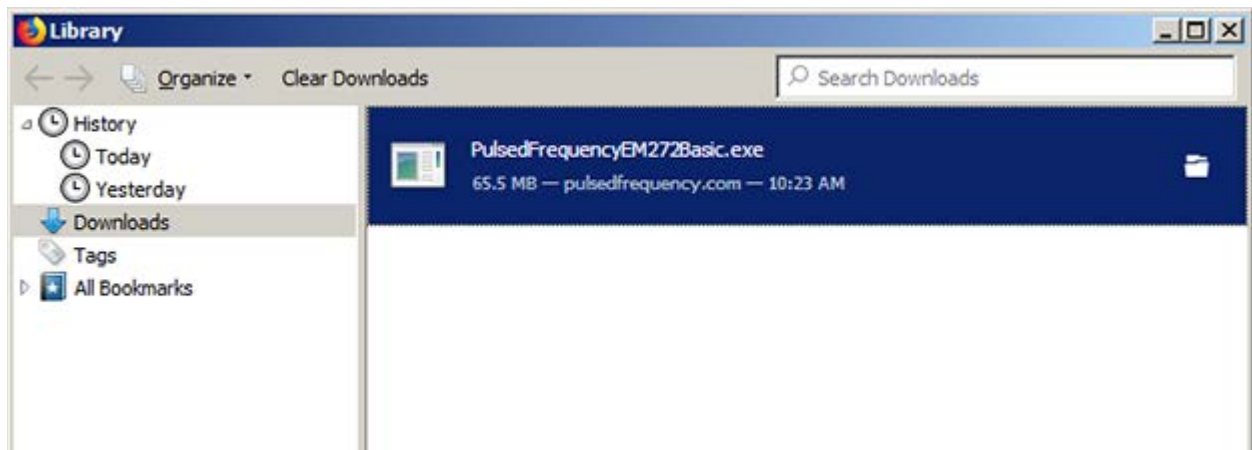
In this dialog box, click the **Save File** button.



Next, go to the upper right hand corner of the browser and click the **Down Arrow**.



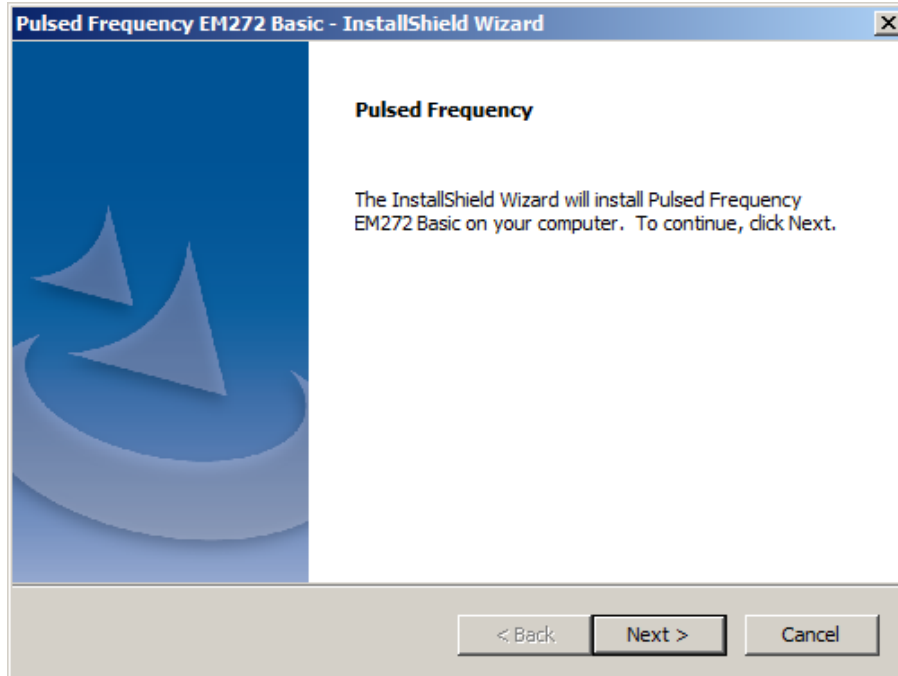
A small window will appear. Click the link in the lower left that says, **Show All Downloads**.



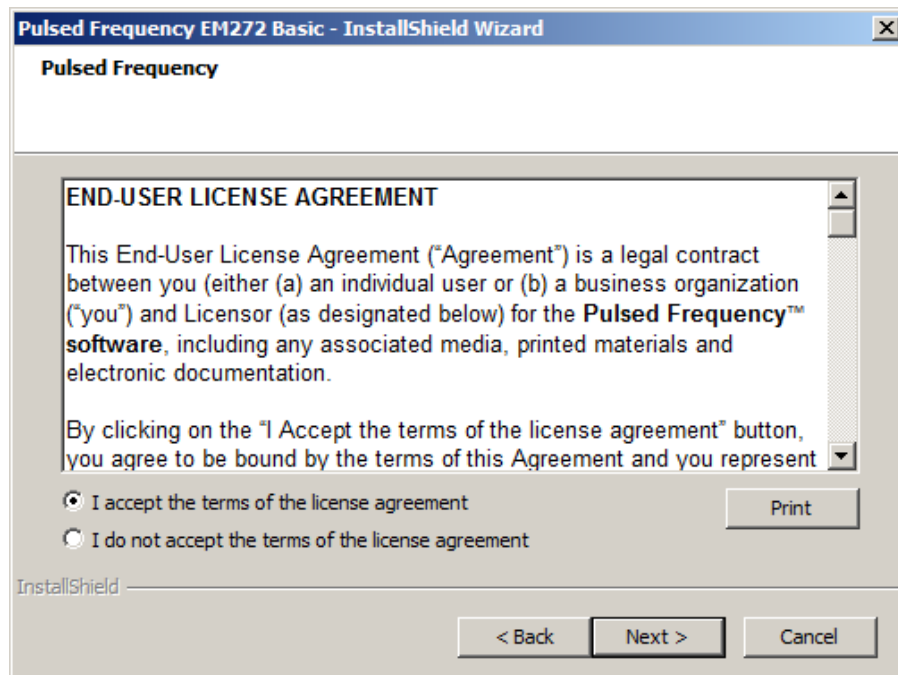
Next, the above window will pop up where you can watch the progress of the downloading file. When the file has downloaded, double-click on **PulsedFrequencyEM272Basic.exe** and the installation program will run.

Install the Software

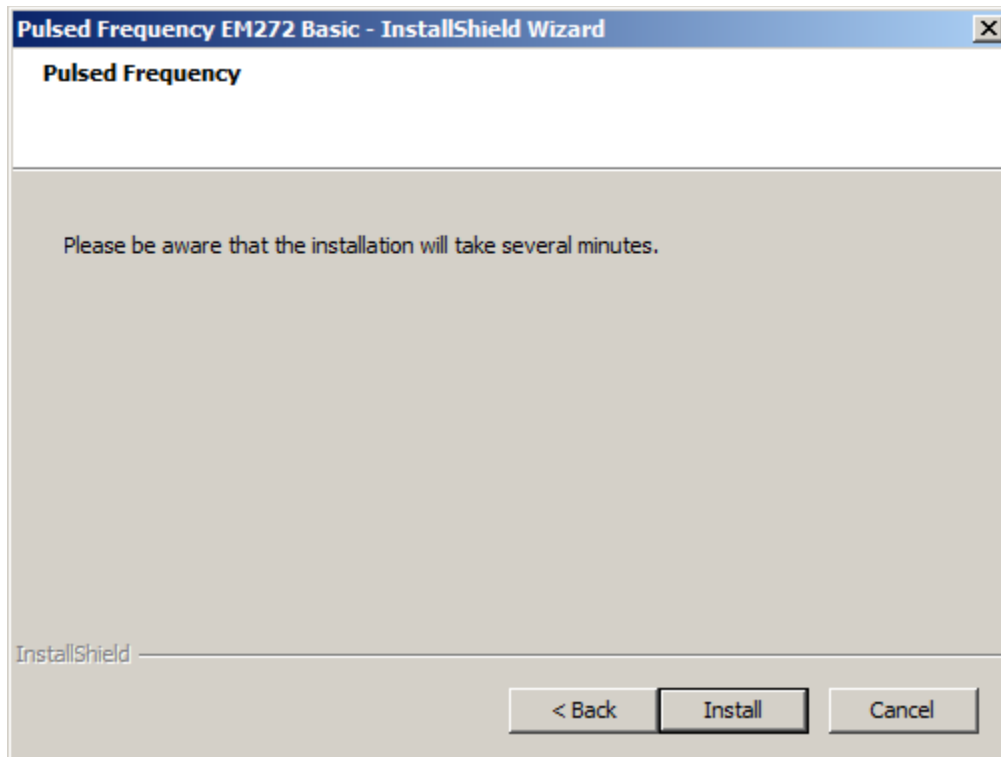
To install the EM272 Basic software, double-click on the downloaded file.



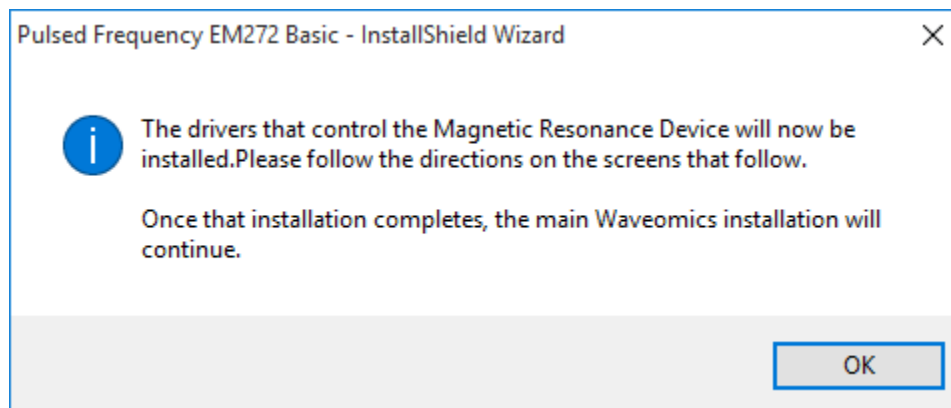
On this Welcome screen, click the **Next** button.



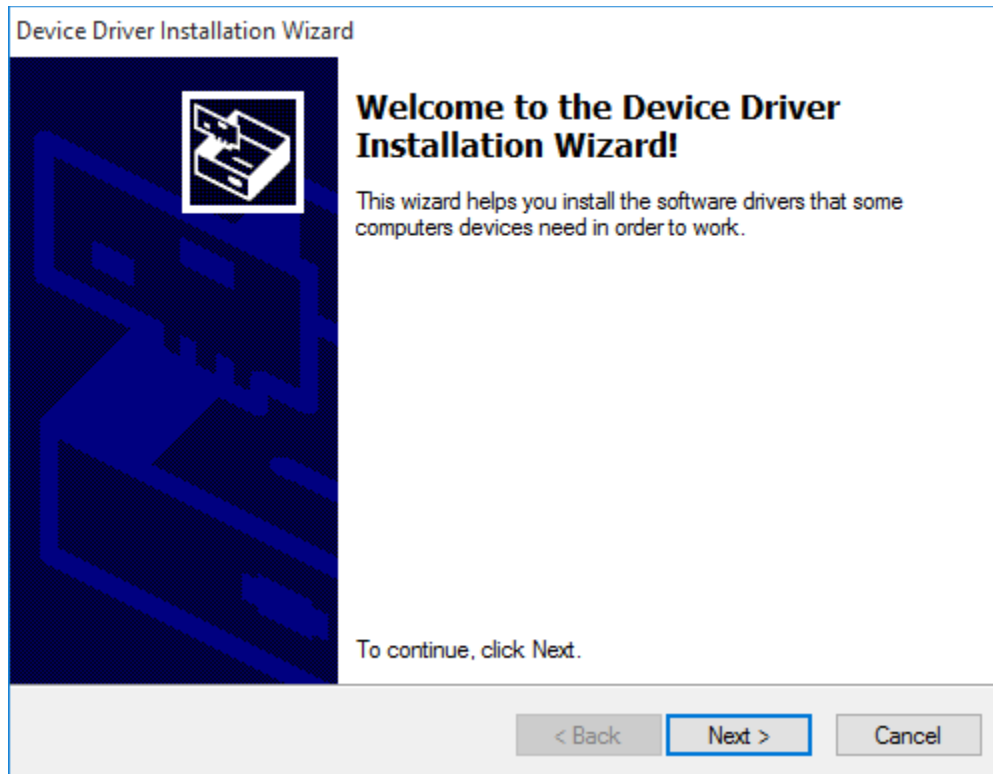
Click **I accept the terms of the license agreement**, then click the **Next** button.



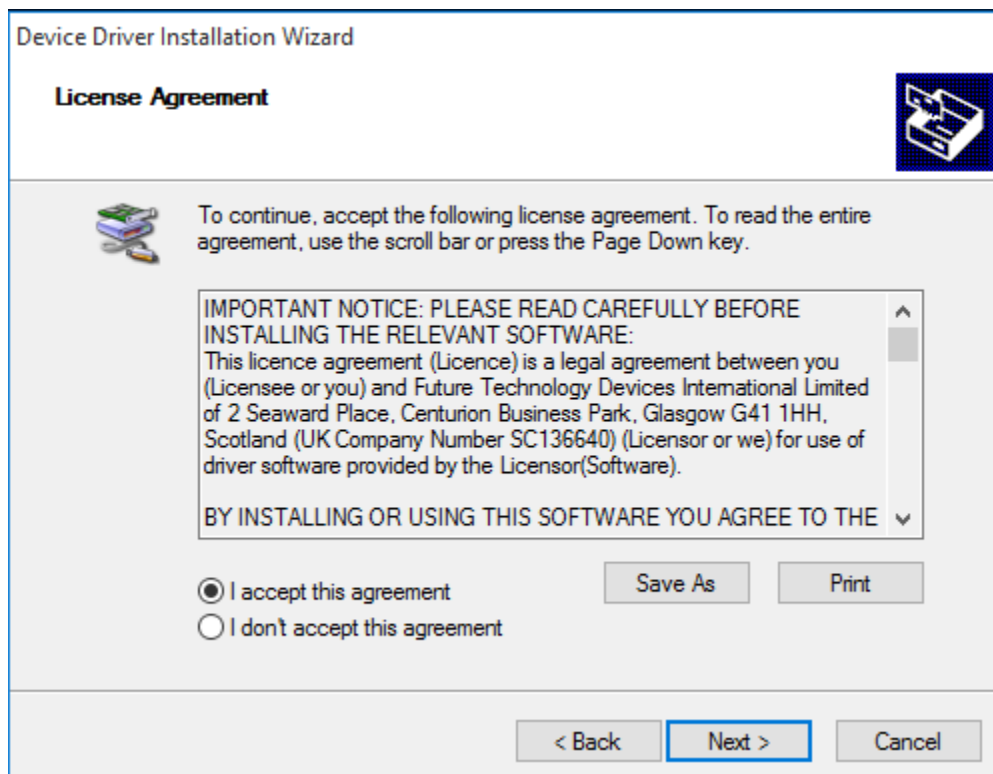
To begin the software installation, click the **Install** button.



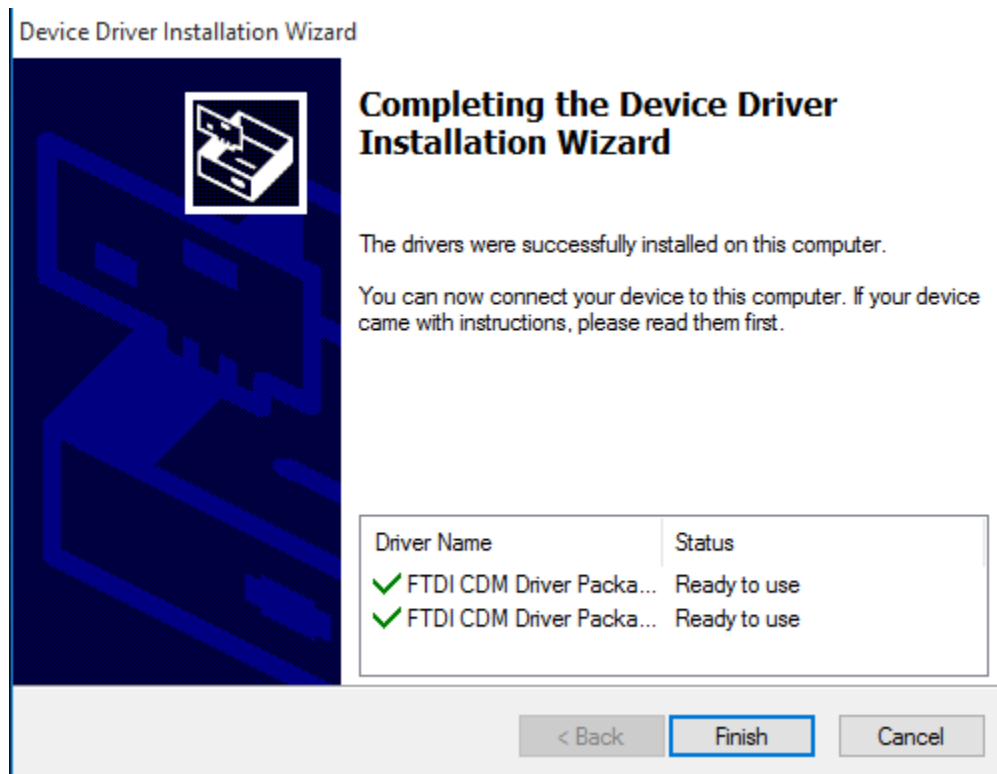
At this point, this dialog box will appear and inform you that the drivers needed for your EM272 will now be installed. Click the **OK** button to begin.



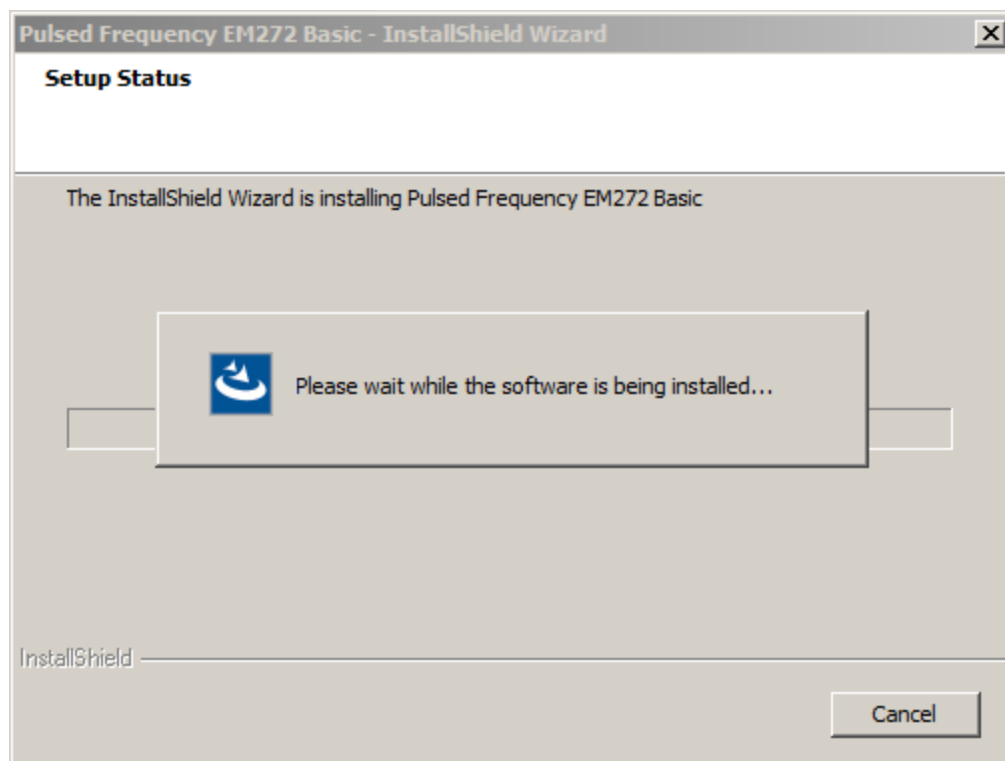
On this screen click the **Next** button.



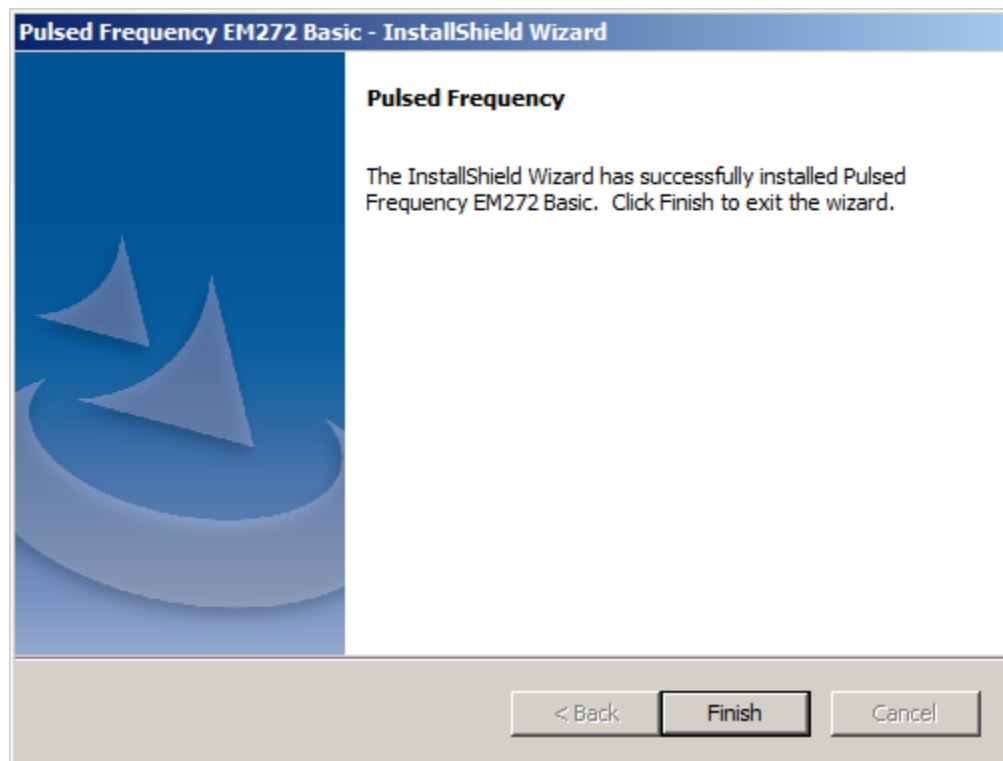
Accept the license agreement, then click the **Next** button.



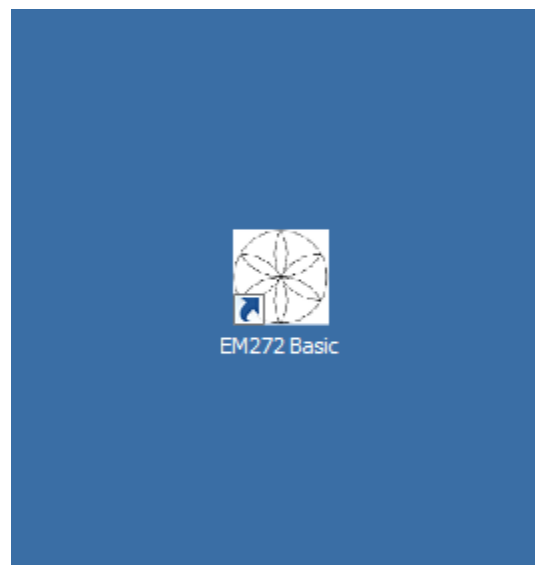
Click the **Finish** button to complete the driver installation.



At this point, the EM272 Basic software will be installed. Just wait until it has completed.



When you see this screen, the installation is complete. Click the **Finish** button.



During installation, a shortcut to the EM272Basic software was placed on your desktop. You can double-click this shortcut to run the software.

Just Feel Better!

EM272/EM272A LED and Magnetic Pulsed Frequency Generator

The EM 272 / 272A is a lightweight, portable and PC-programmable, seven channel pulsed frequency generator. The device is actually three devices in one: A seven channel Magnetic field generator, a seven channel red, deep red and infrared Light Emitting Diode (LED) generator and a two channel LED Laser Nasal Probe generator. Selection of frequencies between 0.1 to 5,000 Hz and treatment parameters are controlled by the easy-to-use software. Both the EM 272 and EM272A use the same software. The only difference between the two devices is that the EM272A has an LED readout on the top side showing the frequencies running in real time.

EM 272



On the EM272, there are 5 lights on the left. The first one is the Charge status, (Green when fully charged; amber/red when low charge). The second and third lights show that the Nasal Probes (L and R) are attached. They glow green when in use. Lights four and five show that the Magnetic Discs (L & R) are attached. They also glow green when in use.

On the Right is the Power button-

Push and hold to turn on and off. The last light is the Power status light, it Glows green when the unit is on.

EM 272A



On the EM272 A. There is a power button on the bottom right of the top side. Press and hold to turn the device on. This will light up the LED screen. The LED screen will not only show the program that is running, but it shows the individual frequencies running on each of the seven coils in real time and also the frequencies running on each Nasal Probe. The screen also shows the change status of the battery.

EM 272 or EM 272A

On the Back of both the EM 272 and 272A, the ports are the same. The first port from the left is a Micro USB port used for programming the device with the USB cable connected to a computer. The next two ports are J45 ports for the Magnetic disks or LED discs. Clip the male J45 plug at the end of the Magnetic Disc wire securely into these ports. The next two ports are for the Nasal Probes. Insert the male AUX end

of the Nasal Probes into these ports. It does not matter which probe is inserted in which AUX port. The last port on the right is for the charger. Use the provided charging / power cable to run on AC current or charge the DC batteries, that are inside the EM272. It is best to keep the charger attached, although it will run for several hours on battery power.

Magnetic Discs

Plug in the Magnetic Discs to the EM272 / 272A generator. Magnetic Discs are worn on either side of the injured area, with the illuminated flower facing away from the body. For instance, if the issue is a headache, place the discs the right and left temples, inside a headband, with the flower facing out. If your back hurts, then you can slip them in your waistband, or put them under your fitted sheet and lay on top of them. If your knee hurts, then put the discs on either side of the knee in a brace.

For overall wellness or for stress recovery, you can place the magnets under your pillow. There is no need for the magnetic discs to be directly on the skin, but they need to be closely held to the body.

The Magnetic Discs or LED discs can be used with or without the Nasal Probes.



21 Light-Pulsed LED Discs

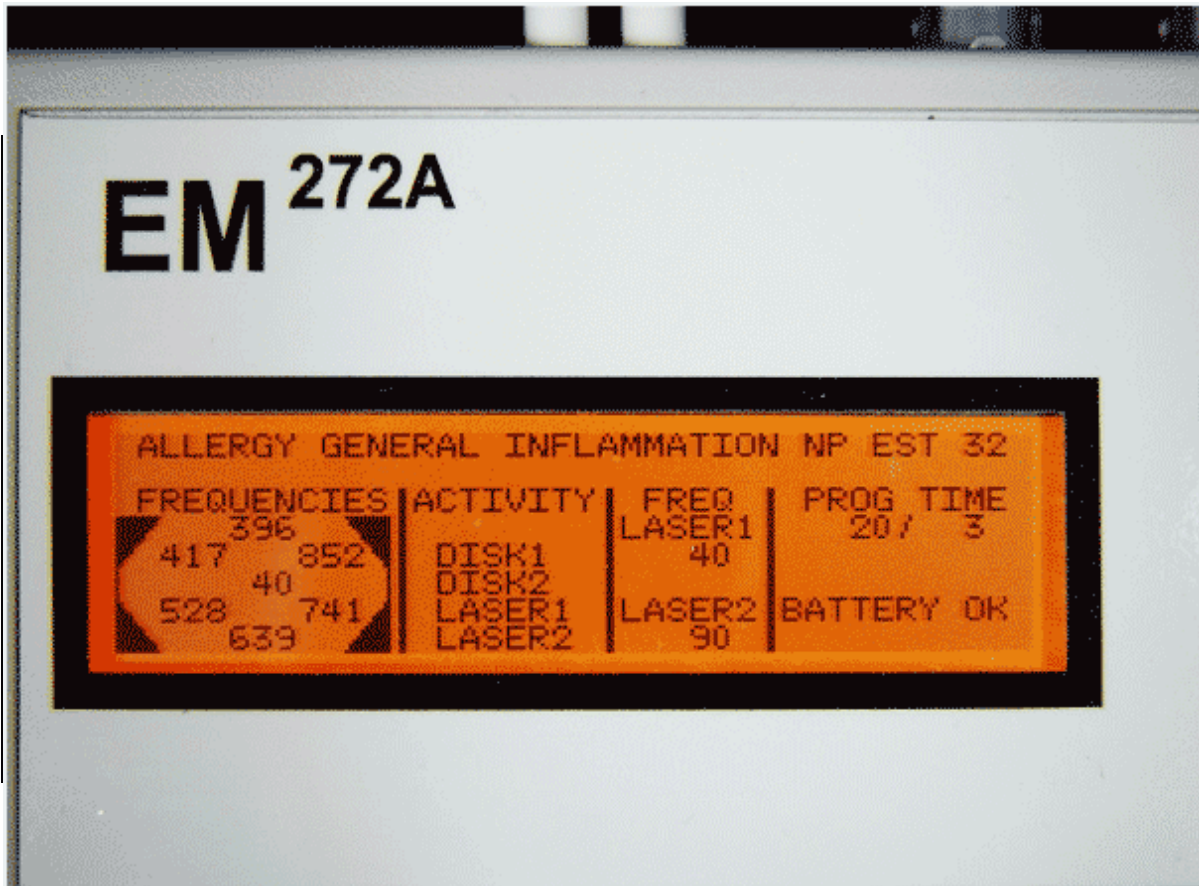
The LED light discs pulse seven frequencies at one time though 21 LED lights, seven red, 620nm, seven infrared, 670nm and seven far infrared, 730nm. LED Lights have been shown to be very beneficial to any issues of skin, wound and issues one inch below the surface of the skin. LED lights need to be directly on the skin, they will not be effective through material. The LED discs will run the same seven frequencies programmed for the magnetic discs and can be run with or without the Nasal Probes.



Nasal Probes

The LED Laser Nasal Probes can run independently or in conjunction with the other discs. Plug in Nasal Probes to the side of the EM272 / 272A frequency generator and insert one probe in each nostril. The clips go on the outside of the nostril. There is a small LED light at the tip of each probe, which is inserted comfortably up the nostril. Nasal probes can be cleaned with an alcohol wipe. Nasal Probe covers are available for a more sanitary treatment.

The Nasal Probes are programmed to pulse at frequencies to support and revitalize different parts of the head and brain. In the software, the Nasal Probe programs will be suffixed with a "NP" and will run an NP program between 30 to 90 minutes. It is suggested that you run the Nasal Probe program first, then additional issue programs after that up to 990 minutes. Additional programs may be programmed in your EM272 / 272A for other issues that do not require the nasal probes.

EM 272A LED Frequency Screen

The Frequency screen on the EM 272A shows what frequencies that are running in real time on each coil of the magnetic disc or LED disc.. Both discs are running the same frequencies, whether you are running magnetic discs or LED light discs. Notice the name of the program is across the top of the screen, In this case, Allergy General InflammationNP EST 32. The NP, means this is a Nasal Probe program. The EST means this is an established program which we have had good results for on the noted issue. The ‘32’ is the time in minutes that the program will run.

The first column from the left shows the frequencies that are running on the magnetic disc or LED disc, in this case you can see the frequency 40 running on the center coil #1, 396 on coil #2, 852 on coil #3, 741 on coil #4, 639 on coil #5, 528 on coil #6 and finally 417 on coil #7. As the frequencies change to the next line of code in the program, these frequencies will change accordingly. These frequencies are programmed through the PulsedFrequency.com software. The second column show the Activity of what is running on the device. In this case it shows all ports are running and plugged in, both discs and both Nasal Probes.

The next column shows that the Laser Nasal probes are plugged in and which frequencies are running on each probe. The Nasal Probes are red lasers that shine up the nasal cavity and have been shown to produce great results for any brain and head related issues. Note that Laser Probe #1 in running frequency 40 and Laser Probe #2 is running frequency 90. These Nasal Probe

compiled frequency files are also programmed through the PulsedFrequency.com software, but are not created for all 450 programs. To program the Nasal Probes, look for the programs with the suffix NP. These are the only programs available for the Nasal Probes.

The last column notes the program number that is running, 20 and the Time that has elapsed since the program started, in this case 3 minutes. The bottom of the column shows the battery status or if the device is charging.



EM272:Useful Tips

It's very important to drink a minimum of 32 ounces of purified water before a treatment, and another 32 ounces of purified water after the treatment. The water helps the frequencies flow through the body and clean out the debris that the cells are casting off.

You may experience a slight dizziness or detoxing flu-like effects from this treatment. If this happens, reduce the treatment time. Slowly increase daily treatment time to 3-4 hours per day. Also increase your water intake until symptoms subside.

It is suggested not to use electronic devices while being treated, such as computers, cell phones, I-pads and Kindles. Electronic devices may not work within the electro-magnetic field. This caveat does not apply to LED Lights.

Disclaimer: The EM272 / 272A device does not claim to treat or correct any medical diseases, injuries or symptoms. The EM272 / 272A is considered a Wellness device.

Connect EM272/ EM272A to Your Computer



To connect the EM272 to the computer, take the supplied Mini-USB cable and orient the smaller end so that it can be plugged into the device.



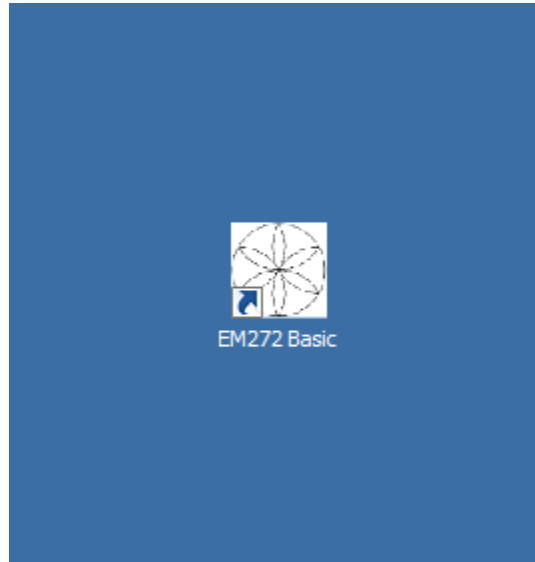
For the EM272, make sure the unit is OFF and plug the Mini-USB cable into the mini-USB jack. The EM272 is OFF if the green LED ring light is not lit.



For the EM272A, make sure the unit is OFF and plug the Mini-USB cable into the mini-USB jack. The EM272A is OFF if the green LED ring light is not lit.



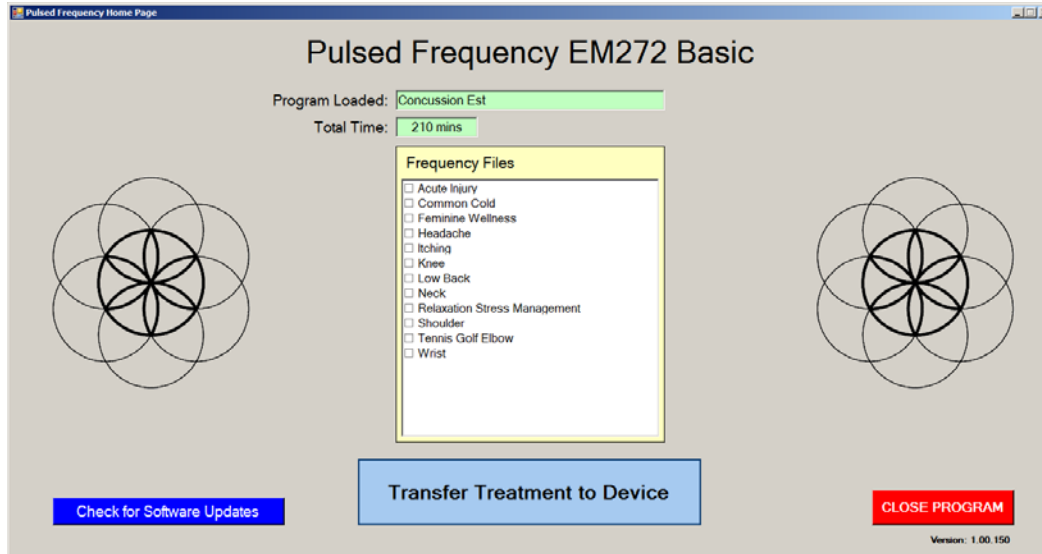
Plug the larger end of the USB cable into your computer.



To run the EM272 Basic software, double-click the **EM272 Basic** shortcut on the desktop.

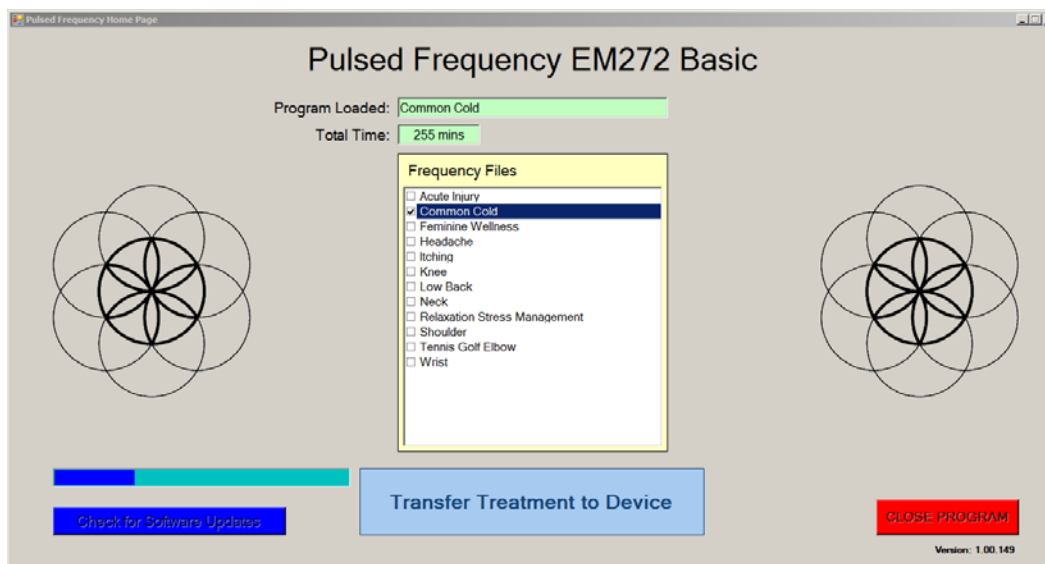
Load a Program into the EM272

Before running the EM272 Basic software, make sure your EM272 is connected to the computer.



The EM272 Basic software is very easy to use. Select one of the available Wellness programs from the list. When you do this, the program name and amount of time it runs for will be displayed at the top.

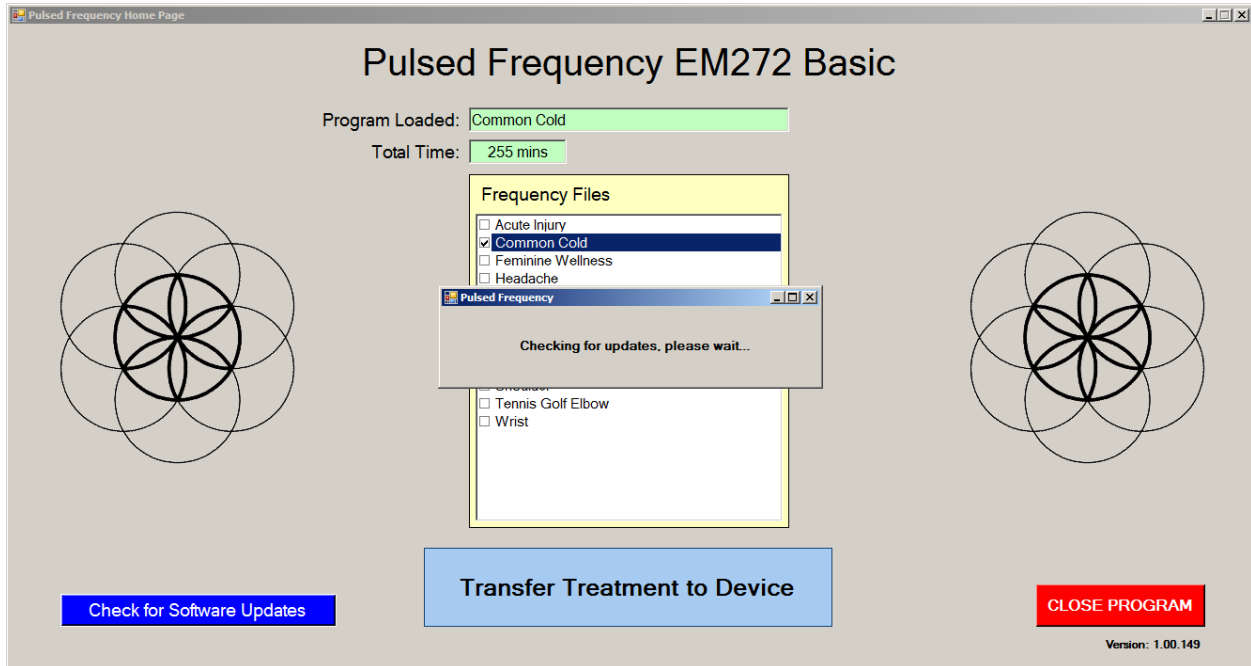
When you are ready, click the **Transfer Treatment to Device** button. The Wellness program will then be transferred to the EM272.



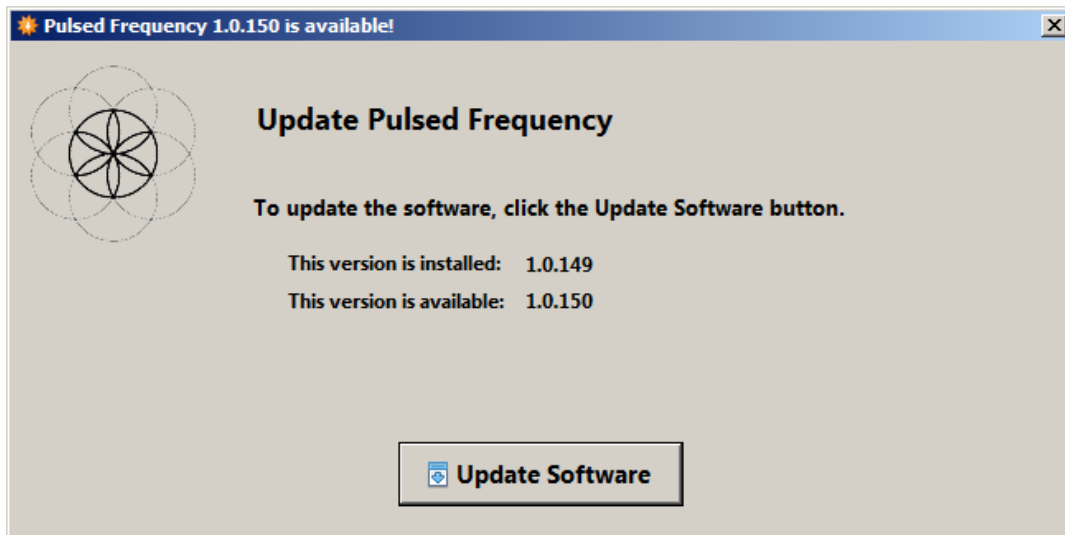
As the program is being transferred, you will see a progress bar at the lower left hand corner of the screen. When the program has finished loading, the EM272 will be ready to use.

Check for Software Updates

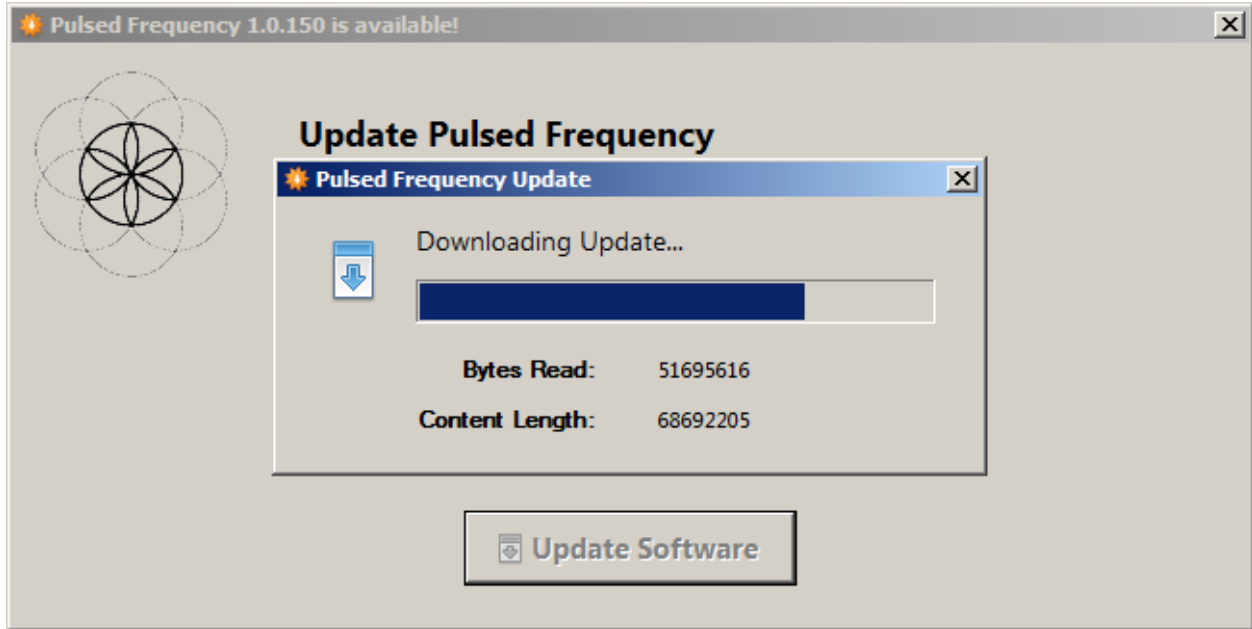
You should periodically check to see if software updates are available for your EM272 Basic software. To do this, click the **Check for Software Updates** button in the lower left hand corner of the screen.



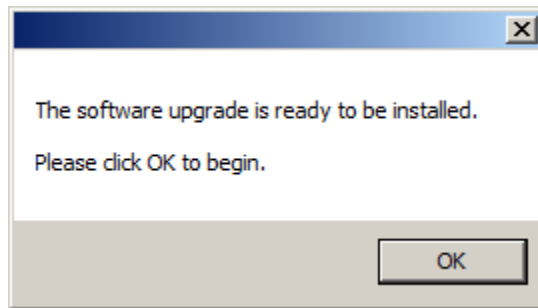
When you click the button, a small dialog box will be displayed telling you the software is checking the server for updates.



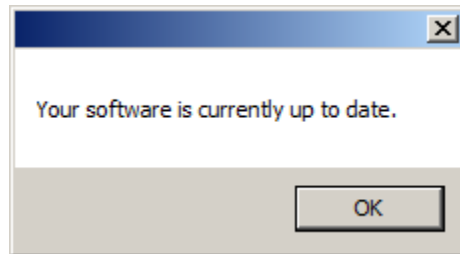
If a software update is available, you will see the above dialog box. Click the **Update Software** button to begin the downloading of the update.



As the software is being downloaded, a progress dialog will be displayed.



When the update has downloaded, the above dialog will be displayed. Click the OK button, the running software will exit and the installation program will run, allowing you to install the update.



Whenever you click the **Check for Software Updates** button and no update is available, the above dialog will be displayed. When this happens, just click the **OK** button to close the dialog box.

Troubleshooting

If you have problems detecting your EM272 / EM272A device, you will need to troubleshoot the problem. To do this, exit from the software and try the following solutions.

Solution 1

If the EM272 is turned on when you connect it to the computer and run the software, you won't be able to do anything. The normal procedure is to turn the EM272 off, connect it to the computer, then run the software. If you do that, everything will work properly.

Solution 2

Even though you have the USB cable plugged into the EM272 and to the computer, you may not have a good connection. Unplug the cable from both the EM272 and the computer, then plug the cable back into both places. Next, run the software, click View Frequency Files in Device, and see if the words, "EM272 is not connected" still appear on the screen. If they don't, your problem is solved. You can now proceed to the Software User Guide section. If you still see the words, proceed to Solution 2.

Solution 3

The most common cause of a connection problem is that Windows cannot see your device. Try plugging the USB cable into a different USB port on your computer. Also, unplug the cable from your EM272 and plug it back in. Run the software again, click View Frequency Files in Device and see if you can see the files loaded into your EM272. If you can see the files, proceed to the Software User Guide section. If you still get the message, "EM272 is not connected", proceed to Solution 3.

Solution 4

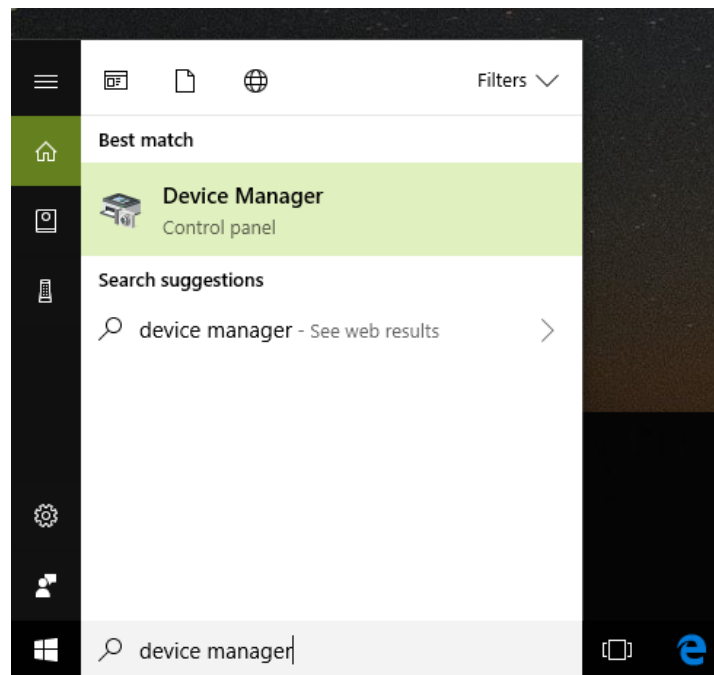
If you are still having a problem, try plugging the larger end of the USB cable into a USB hub. The hub must be powered for this to work. A powered USB hub is where a power cable runs from the hub to an AC adapter that plugs into a wall outlet. With the EM272 plugged into the hub, run the software and try to load a treatment. If you can, your problem is solved.

Solution 5

Another cause of a connection problem is a bad USB cable. If you suspect your cable, then replace it and try again.

Solution 6

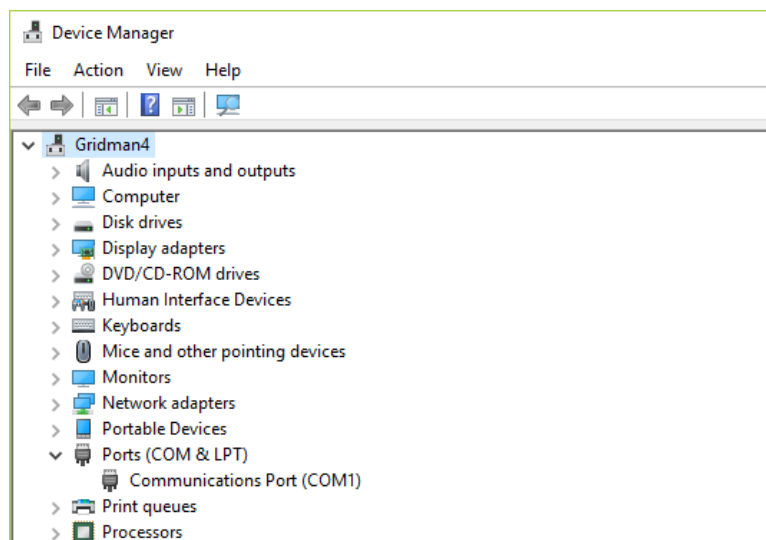
If all other solutions have failed, a final check is to run the Device Manager.



If you are using Windows 10, go to the lower left hand corner of the screen and enter the words "device manager". When that choice appears in the list, click on it.

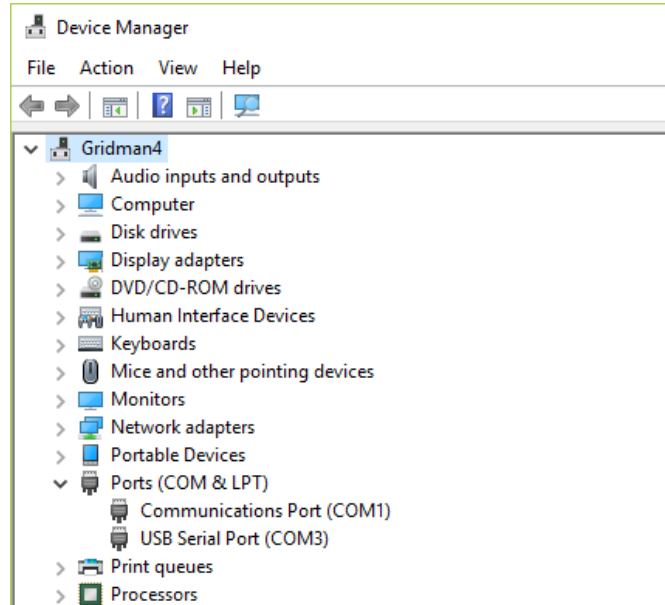
If you are using Windows 8 or 8.1, click the flag in the lower left hand corner and type "device manager." When that choice appears in the list, click on it.

If you are on Windows 7, click the Start button in the lower left hand corner, and enter "device manager" in the search box. When that choice appears in the list, click on it.



In Device Manager, click the arrow next to Ports (COM & LPT) in order to expand the list. If the EM272 is connected and you see something similar to the screenshot above, then Windows

cannot see your device. Try any of the above solutions then come back to Device Manager and look at the list.



When Windows can see your EM272, you will see an entry similar to the one above that says, "USB Serial Port (COM3). It may show a different COM port, but that is okay. The main thing to remember is that when Windows can see your EM272, it will assign a COM port to it. You should now be able to run the software and transfer treatments to the EM272.

EM272 Manual Detection

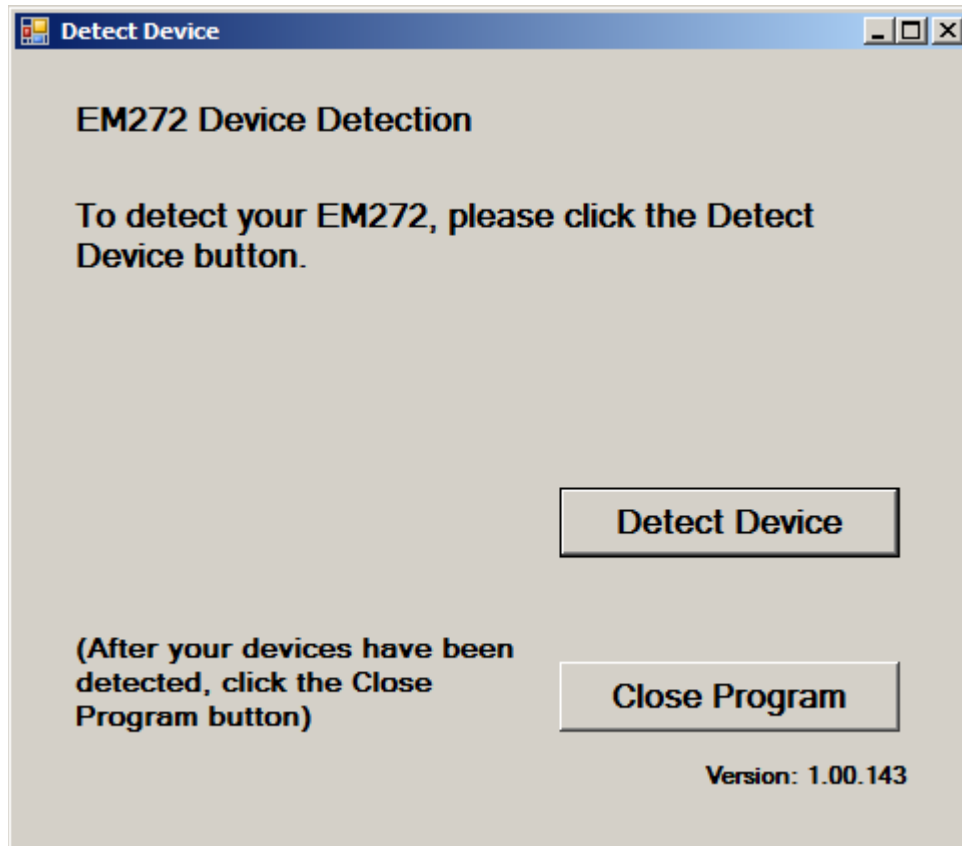
Please follow these steps in order to manually detect your EM272 / EM272A.

On Windows 10, click the Windows flag in the lower left corner of the screen and scroll down the list of programs until you see the Pulsed Frequency folder. Expand that folder and select **Detect EM272**.

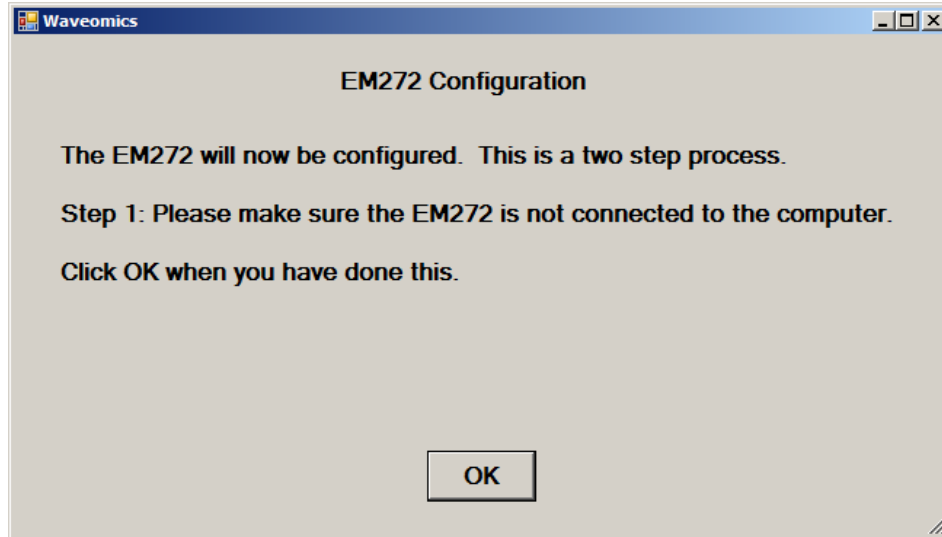
On Windows 8 or 8.1, click the Windows flag in the lower left corner of the screen, type "detect EM272" and when that item is displayed in the list on the right, select it to run the utility.

On Windows 7, go to the Start Menu, click All Programs, scroll down to the Pulsed Frequency folder and select the **Detect EM272** program. Make sure your EM272 is not connected to the computer when you do this.

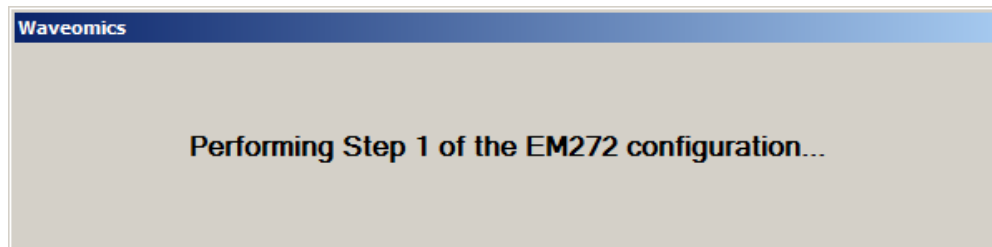
After you have clicked on the shortcut, you will get a warning from Windows saying "Do you want to allow this app from an unknown publisher to make changes to your device?" Click "Yes". Follow the instructions on the screen to detect your device.



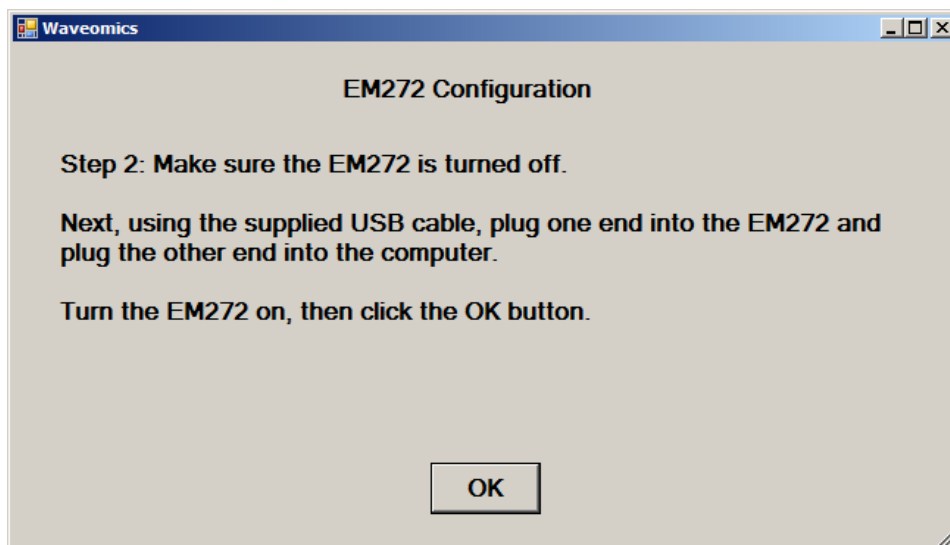
On the first page of the program, click the Detect Device button. The following dialog box will then be displayed.



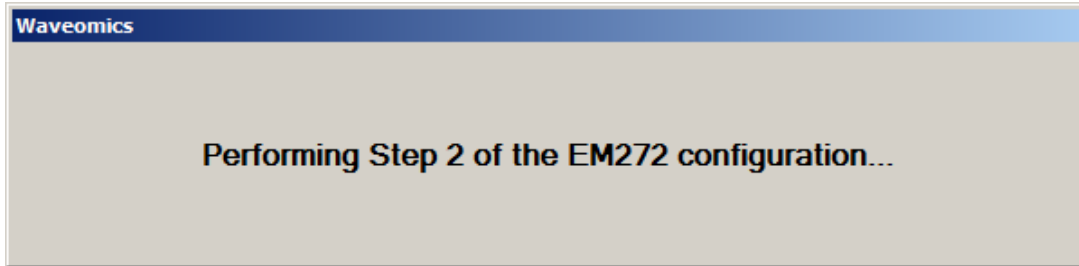
Make sure the EM272 is not connected to the computer, then click the **OK** button.



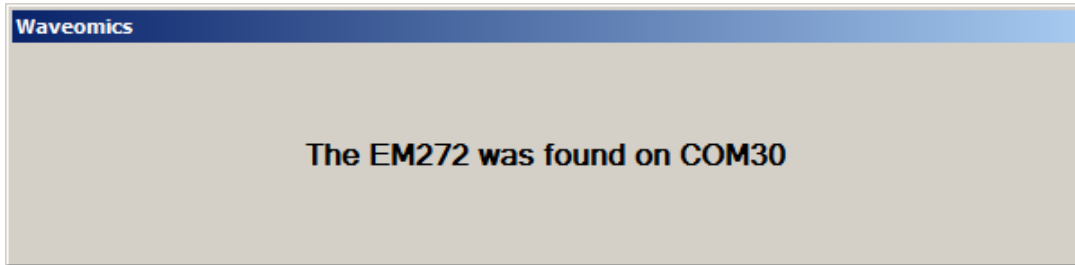
Here, the program is examining your system without the EM272 connected. After this is finished, the following dialog box will be displayed.



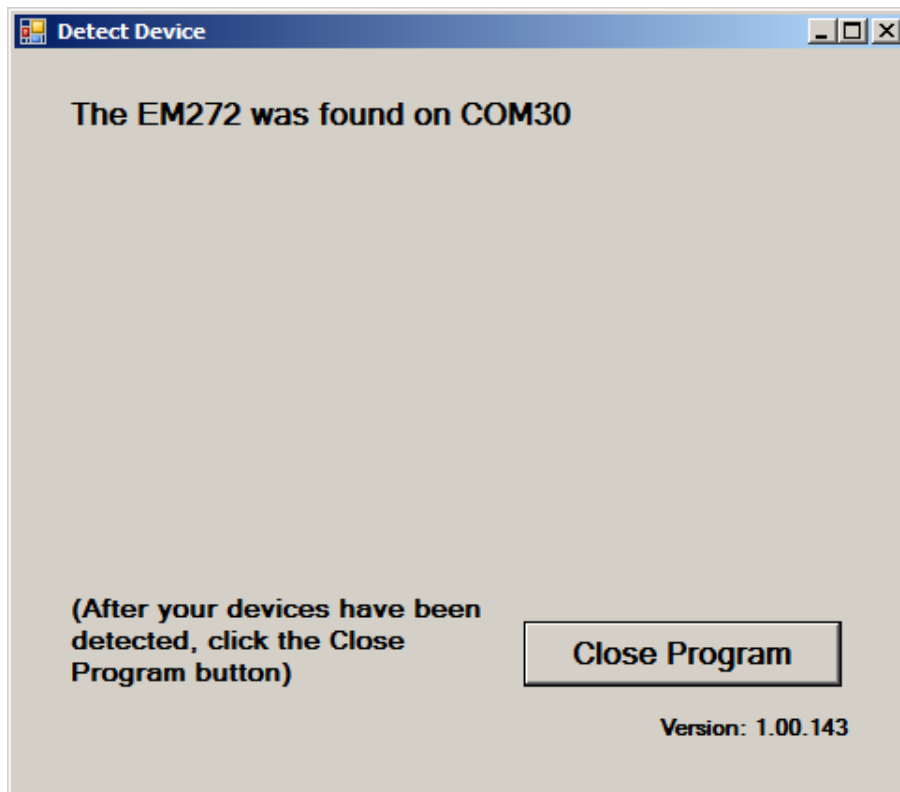
Make sure the EM272 is turned off, connect it to the computer, then click the **OK** button.



Here, the program is examining your system with the EM272 connected.



When your device has been detected, you will be returned to the main screen of the program.



The location of the EM272 will be displayed on this screen and its location will have been saved in the configuration information for the Pulsed Frequency EM272 software. You can now click the **Close Program** button to exit the program. This completes the manual detection process.

The Pulsed Frequency™ software can now be run with the EM272. Go to the desktop and double-click on the EM272Basic shortcut.

